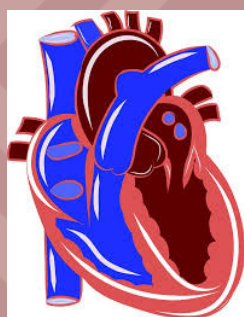
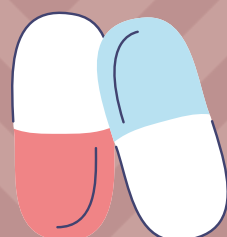


ISCHEMIC HEART DISEASE



STABLE ANGINA

- ANGINA THAT OCCURS WITH *PREDICTABLE EXERTION*
- RELIEVED WITH *REST OR NTG*



ACUTE CORONARY SYNDROME

1. UNSTABLE ANGINA
2. NSTEMI
3. STEMI



UNSTABLE ANGINA

ETIOLOGY: NON-OCCLUSIVE CORONARY THROMBUS

PATHO: ISCHEMIA TO MYOCARDIUM

FEATURES: CHEST PAIN OCCURRING **AT REST AND UNRELIEVED BY MEDICATION**

LABS: NORMAL CARDIAC ENZYMES

NSTEMI

ETIOLOGY: *INCOMPLETE* OCCLUSION BY A CORONARY THROMBUS

PATHO: ISCHEMIA TO MYOCARDIUM

FEATURES: CHEST PAIN, DYSPNEA, DIAPHORESIS

LABS: ELEVATED CARDIAC ENZYMES

ECG: POSSIBLE ST-DEPRESSION



STEMI

ETIOLOGY: *COMPLETE* OCCLUSION BY A CORONARY THROMBUS

PATHO: ISCHEMIA TO MYOCARDIUM

FEATURES: CHEST PAIN, DYSPNEA, DIAPHORESIS

LABS: ELEVATED CARDIAC ENZYMES

ECG: POSSIBLE ST-ELEVATION, NEW LBBB